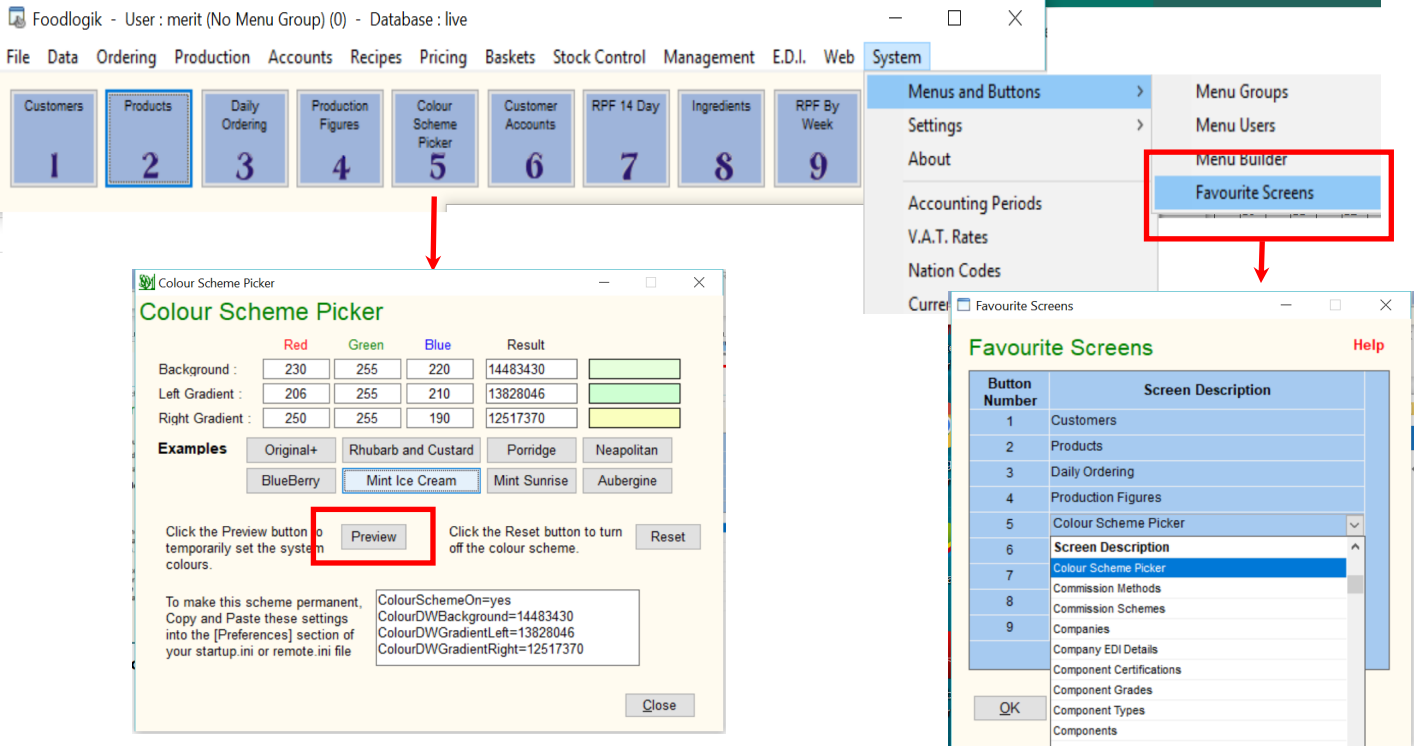


Foodlogik Colour Scheme Picker

Set an individual colour scheme for the whole system or for specific PCs

1. Add Colour Scheme Picker to a menu button



2. Select a colour and click *Preview*, then open any screen ...



Don't worry ... its not permanent until you update the remote.ini or startup.ini file!
If you need help with that, just give us a call

Contact Foodlogik on 01795 508750

info@foodlogik.co.uk
www.foodlogik.co.uk